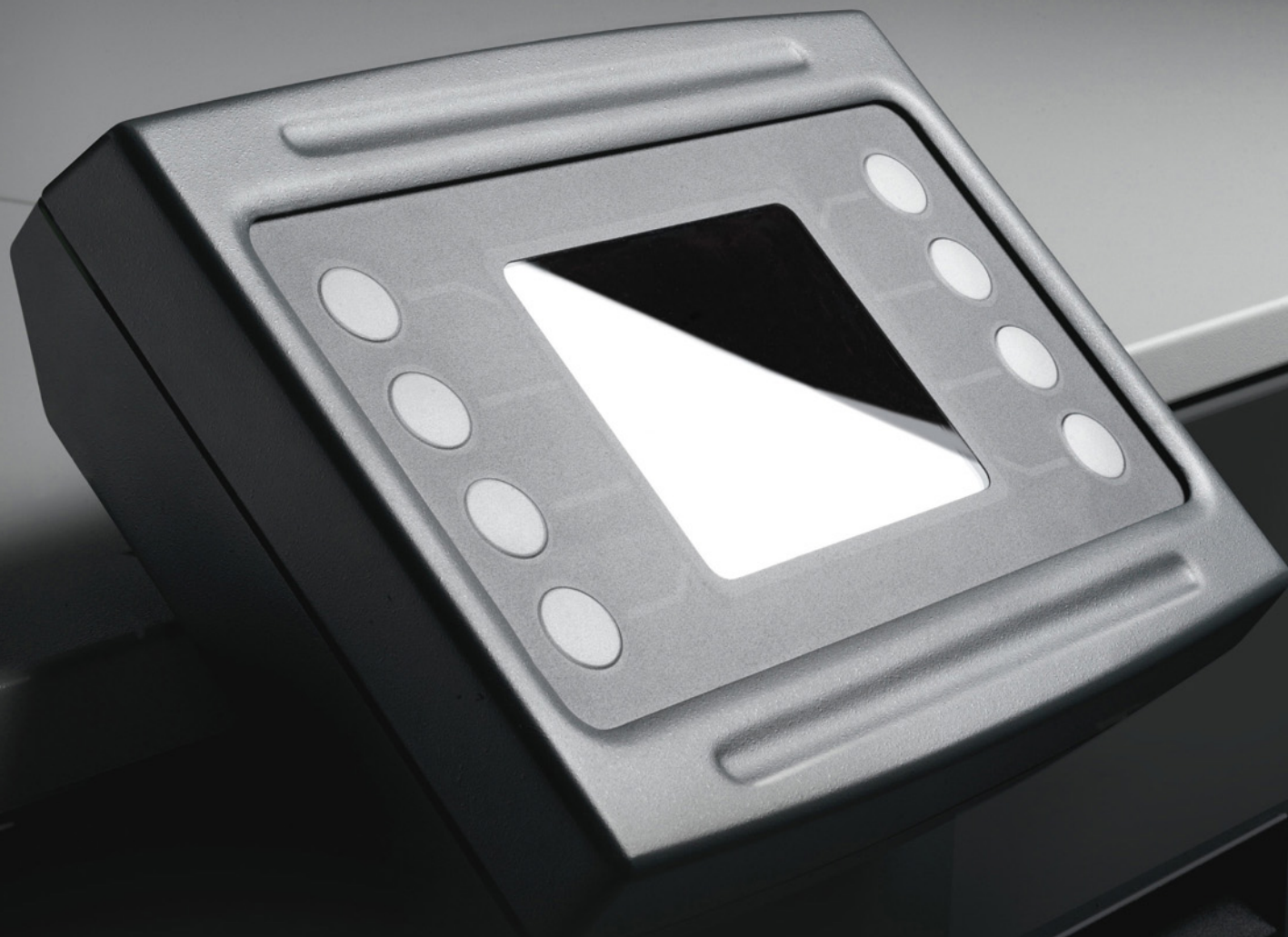




advanced processing systems

62&85



advanced processing

maya



62&85

The Maya 62 & 85 Photopolymer Processors are designed to meet the needs of low-to-medium throughput plate processing. The Maya range combines unparalleled looks with the durability, robustness and sophistication associated with all Heights equipment, providing a complete solution for those requiring high quality plate processing.

advanced processing
maya



Designed with ease of operation and maintenance in mind, the Maya provides simple access to the processor tank as well as quick release side panels allowing access to the plumbing, control and drive systems. A full screen interface provides constant feedback on the machine status and allows intuitive interaction with the software that controls all aspects of the machine operation. The versatility and flexibility of the control software enables simple configuration for automatic, semi-automatic and manual operations.

Built for both off-line and on-line configurations, the Maya has a recommended throughput of up to 350m² per week. B3, B2 and B1 portrait customers will benefit considerably from this small footprint processor.



advanced processing
maya 62

Maximum Plate Width 620mm (24.4")	Finisher Tank 1.2L (0.32 US Gal)
Minimum Plate Length 290mm (11.4")	Plate Input Height 830 - 1055mm (32.7 - 41.5")
Plate Thickness 0.15 - 0.30mm (0.006 - 0.012")	Dimension (L x W x H) 1760 x 866 x 957-1193mm (69.3 x 34.9 x 37.7-46.7")
Plate Transport Speed 1400mm/min (55.12"/min)	Machine Net Weight 395kg (870lbs)
Pre-Wash Tank Capacity 16L (4.1/4 US Gal)	Recommended Room Temp. 18 to 29°C (64.4 to 84.4°F)
Developer Tank Capacity 26.5L (7.0 US Gal)	Noise Less than 60 dB(A)
Rinse Tank Capacity Direct to Drain	Avg. Weekly Recommended Throughput Up to 350 m ² (3667.37 Ft ²)

Features

- Robust elegant design
- Colour coded wet system
- Energy and water saving features
- Developer replenishment by plate area
- Sophisticated anti-ox system
- Easy access for maintenance
- Remote diagnostics
- Platesetter interface options
- Bulk fill system
- Chiller system

Electrical Supply
 220-240V 1W + N + PE/GND 21A - 50/60Hz
 220-240V 2W + PE/GND 21A - 60Hz
 380-415V 3W + N + PE/GND 9A - 50/60Hz

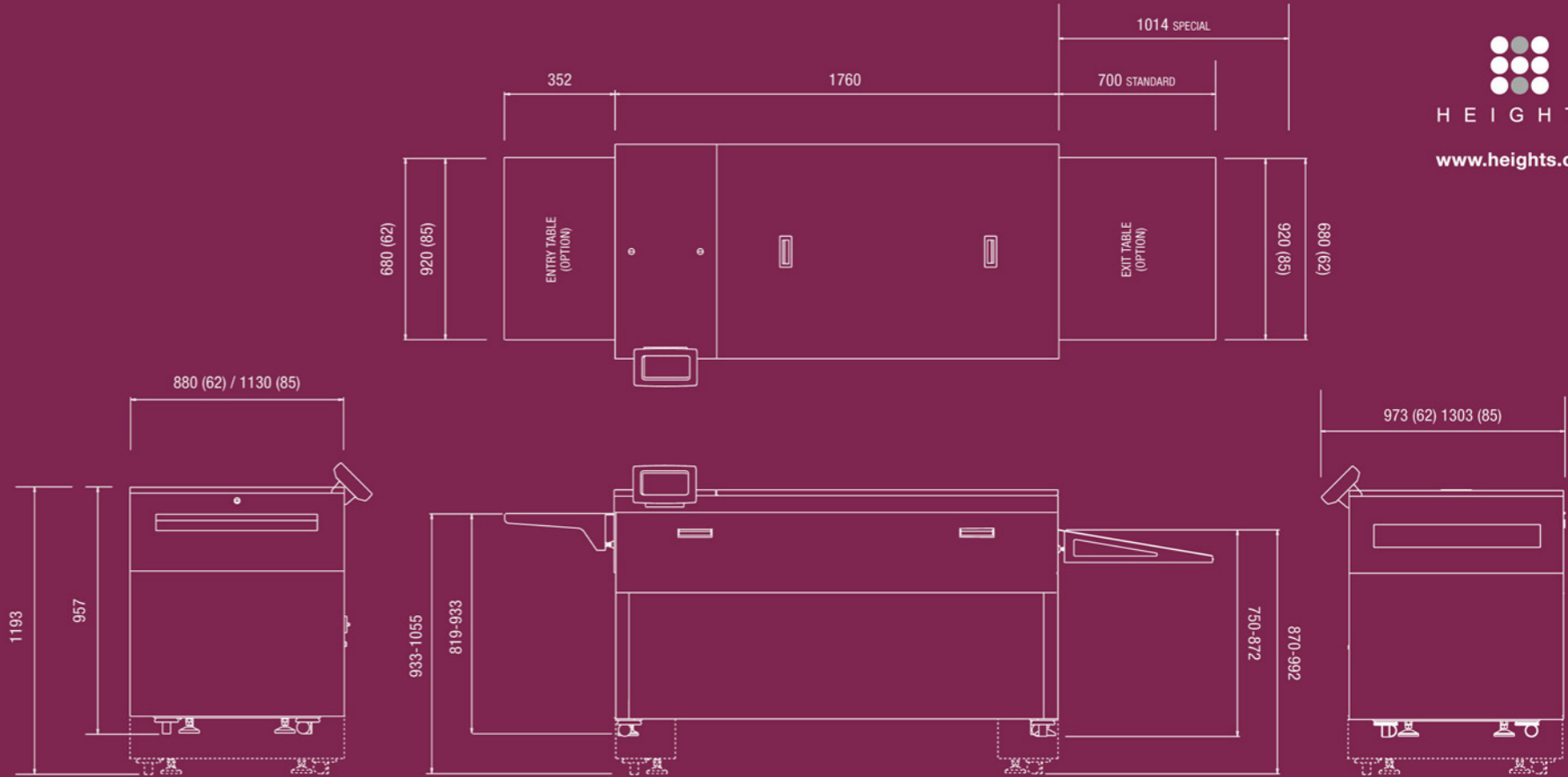


advanced processing

maya 85

- Maximum Plate Width**
850mm (33.4")
- Minimum Plate Length**
290mm (11.4")
- Plate Thickness**
0.15 - 0.30mm (0.006 - 0.012")
- Plate Transport Speed**
1400mm/min (55.12"/min)
- Pre-Wash Tank Capacity**
22L (5.3/4 US Gal)
- Developer Tank Capacity**
35L (9.25 US Gal)
- Rinse Tank Capacity**
Direct to Drain
- Finisher Tank**
1.6L (0.42 US Gal)
- Plate Input Height**
830 - 1055mm (32.7 - 41.5")
- Dimension (L x W x H)**
1760 x 1111 x 974-1199mm
(69.3 x 43.7 x 38.4-47.2")
- Machine Net Weight**
456kg (1005lbs)
- Recommended Room Temp.**
18 to 29°C (64.4 to 84.4°F)
- Noise**
Less than 60 dB(A)
- Avg. Weekly Recommended Throughput**
Up to 350 m² (3667.37 Ft²)

- Electrical Supply**
- 220-240V 1W + N + PE/GND 24A - 50/60Hz
- 220-240V 2W + PE/GND 24A - 60Hz
- 380-415V 3W + N + PE/GND 12A - 50/60Hz



62&85

Heights (UK) Ltd
Wainstalls, Halifax. West Yorkshire. England. HX2 7TJ
tel. +44 (0)1422 240914 fax. +44 (0)1422 240589
email. info@heights-uk.com

Heights USA Inc.
1445 Lower Ferry Road, Trenton. New Jersey. 08628 USA
Tel. +1 (609) 530-1300 Fax. +1 (609) 530-9430
Email. info@heights-usa.com

Heights Asia
No.3 Building, Chengdong Development Zone
Yuyao City, Zhejiang Province, China
Tel. +86 1360 123 8167 Email. info@heights-asia.com